

Northwestern Electric News

Vol. 65 Number 9

Your Touchstone Energy® Cooperative

July 2014

Inside

EPA regulations	2
Energy Camp	3
Recipe.....	3
Watts Up Kids Camp	4
Power outages.....	4

Lesser prairie chicken listed as threatened species *New regulation will have direct impact on construction costs*

In late March, the U.S. Fish and Wildlife (USF&W) listed the lesser prairie chicken (LPC) as threatened and requires electric suppliers such as Northwestern Electric Cooperative to comply with a wildlife conservation plan developed by the Western Association of Fish and Wildlife Agencies (WAFWA).

The WAFWA plan was developed by the five states now impacted by the listing of the LPC. The states involved consist of Oklahoma, Kansas, Colorado, New Mexico and Texas. The plan was developed to encourage range-wide conservation to increase the population of the LPC.

NWEC, along with landowners and other industries, joined the pro-

gram hoping that voluntary participation would prevent USF&W from listing the species as threatened. However, voluntary participation did not avoid the listing.

Voluntary participation does provide some protection to NWEC in the case of an accidental taking of an LPC by NWEC as well as by grandfathering our existing electric facilities into the plan.

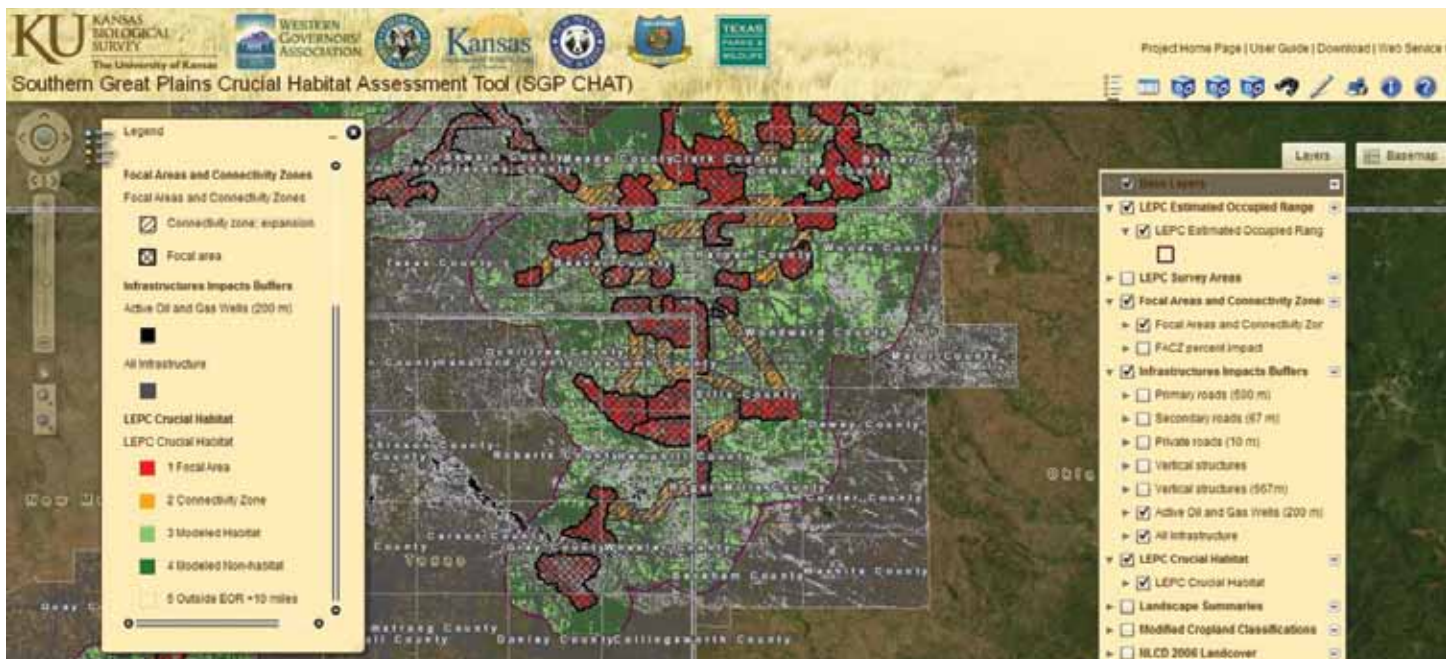
The regulatory decision directly impacts NWEC in almost all of our service territory (see the map below). It is an important issue to NWEC as this **now mandatory** plan limits where power lines can be constructed and when construction and normal operations on our electric system



The lesser prairie chicken, now listed as a threatened species, inhabits the majority of NWEC's territory.

can occur. It will also increase the cost to build new facilities and extend the time frame to complete new construction.

If you have any questions regarding how this listing of the LPC as threatened impacts your plans for new construction, please let us know.



The map shows areas where the lesser prairie chicken can be found. As you can see, the lesser prairie chicken's habitat involves almost all of Northwestern Electric's service territory.

**NORTHWESTERN
ELECTRIC
COOPERATIVE, INC.**

Woodward, Oklahoma
Operating In
Beaver, Dewey, Ellis, Harper,
Major, Woods and Woodward
Counties in Oklahoma

**TYSON LITTAU
CHIEF EXECUTIVE OFFICER**

BOARD OF TRUSTEES

Kenny Knowles, Pres..... Arnett
Ray Smith, Vice-Pres..... Taloga
John Bruce, Jr., Sec.-Treas. Sharon
Marvin Wilkinson Buffalo
Clair Craighead Woodward
Wayne Hall..... Mooreland
Duane Henderson..... Mooreland
Lee Huckaby Selman
Gilbert Perkins. Gate

Jonna Hensley Editor
Michael W. Mitchel..... Attorney

**IN CASE OF TROUBLE CALL:
24 HOUR EMERGENCY
1-877-9NOPOWER
877.966.7693**

If no answer call:
John Kirkwood.....580.866.3245
Bob Appell580.273.4088

NOTICE
A copy of NWEC Bylaws will be made
available for any member upon request.

**Web page: www.nwecok.coop
E-mail: nwec@nwecok.coop**

NWEC is an equal opportunity provider and employer.

If you wish to file a Civil Rights program complaint of discrimination, complete the USDA Program Discrimination Complaint Form, found online at http://www.ascr.usda.gov/complaint_filing_cust.html, or at any USDA office, or call 866.632.9992 to request the form. You may also write a letter containing all of the information requested in the form. Send your completed complaint form or letter to us by mail at U.S. Department of Agriculture, Director, Office of Adjudication, 1400 Independence Avenue, S.W., Washington, D.C. 20250-9410, by fax 202.690.7442 or email at program.intake@usda.gov.

EPA’s power plant rule raises concerns

National Rural Electric Cooperative Association (NRECA) CEO Jo Ann Emerson issued a statement on the latest round of Environmental Protection Agency (EPA) regulations limiting carbon dioxide emission for power plants.

“Americans count on affordable and reliable energy to power our communities, promote job and economic growth, and keep costs in line for the basic necessities in our family budgets. New EPA regulations that add to the price of electricity have serious consequences for our communities, jobs and families.

“It’s very disappointing and disturbing that the EPA proposed a regulation that goes further than the Clean Air Act allows by taking an ‘outside the fence’ approach to setting the emissions reduction requirements that states must accomplish.

“America’s electric cooperatives are naturally concerned that these regulations will increase electricity prices and force power plant shutdowns, thereby harming the economy and jobs of hard-working Americans. However, there are a lot of details to work through in the proposal—and *additional* details that will be outlined in yet-to-be-developed state plans.

“Co-ops serve some of America’s communities most sensitive to, and

least able to afford, increases in the cost of energy. Electric co-ops require independence and flexibility to choose solutions based on the needs of the communities they serve, which thoughtfully take into account balanced consideration of affordability, reliability and environmental responsibility.

“America’s not-for-profit, member-owned electric cooperatives remain laser-focused on the affordability and reliability of the electricity that powers our communities and will provide the EPA with detailed feedback after analyzing the proposal through that lens.”

To combat the EPA’s aggressive new regulations, electric cooperatives across the country are asking their members to join together and tell Washington not to impose these regulations and to keep energy costs low for hard-working consumers and their families. Let your voice be heard by signing one of the comment cards available at www.Action.coop.

**Happy 4th of July
Northwestern Electric
will be closed
on Friday, July 4.
For emergencies,
call 877.966.7693.**

April 2014 Operating Report

	2013	2014
Revenue - Billing	2,526,519	2,982,119
Cost of Power	1,218,499	1,883,824
Miles of Lines	4,928	4,956
Members Connected	11,635	11,775
Density per Mile	2.36	2.38
Average Member KWH	2,387	2,393
Average Bill	217.15	253.26
KWH Purchased.....	28,321,007	28,492,041
KWH Sold.....	27,777,737	28,173,569
Income per Mile.....	516	605
Expense per Mile	505	585

Students experience a powerful good time at camp

Callie Cason, Mekenna Jones, Clare Peoples and Andrew Todd recently returned from the 2014 Rural Electric YouthPower Energy Camp where they served as delegates from Northwestern Electric Cooperative.

The four students were among 89 outstanding 8th graders chosen from across the state to represent their local rural electric cooperative during the four days at Canyon Camp, just east of Hinton, Okla. (11937001)

While at the camp, the delegates attended sessions on energy, electrical safety and rural electric careers. They elected their own manager and board of directors and operated a coke and candy cooperative.

Other special activities of the four-day program included hands-on electrical demonstrations, such as pole-climbing and bucket truck rides from linemen, a 13 low-element ropes



By the smiles on their faces, you can tell Clare Peoples, Mekenna Jones, Callie Cason and Andrew Todd had a good time at the 2014 YouthPower Energy Camp.

course, swimming, an energy battle tournament and a trip to Celebration Station for video games and go-carts.

Callie is the daughter of Bo and Julie Cason of Woodward. Mekenna's parents are Melissa and Mateo Rocha of Fort Supply. Clare is from Vici

and her parents are Eric and Donna Peoples. Andrew is the son of Angie and Layne Longhofer, Woodward.

YouthPower Energy Camp is coordinated by the Oklahoma Association of Electric Cooperatives and Northwestern Electric.

Hidden account number contest

Congratulations to Hal Nine for recognizing his account numbers in last month's newsletter! The other number belonged to Gigi Jones.

We have hidden two account numbers somewhere in the articles in this newsletter. The numbers will always be enclosed in parentheses and will look similar to this example (XXXXXX).

If you recognize your account number, all you have to do is give us a call on or before the 8th of the current month and we'll give you a credit on your bill for the amount stated.

This month's numbers are worth \$25 each. Happy hunting!

Country cooking

Orange Julius Knock-Off

- 6 ounces frozen orange juice concentrate, thawed**
- 1 cup whole milk**
- 1/2 cup water**
- 1/3 cup sugar**
- 1 teaspoon vanilla extract**
- 1/2 cup cool whip**
- 1 cup crushed ice**



Combine all ingredients except crushed ice in blender.

Blend for about 1-2 minutes, adding crushed ice until smooth.

Yield: 3 servings.

Enroll your child in Watts Up Kids Camp

Free summer camp for children of Northwestern Electric Cooperative members

Northwestern Electric's Watts Up Kids Camp is a camp for 1st through 3rd graders that will be held at our main headquarters in Woodward on July 30. Camp hours are 8:30 a.m. until 11:30 a.m.

The camp is free for the children of NWECC members. The three-hour session includes a variety of learning tools, games and activities to help kids learn about electricity, where it comes from and how to be safe around it.

To enroll your child, fill out the form and return it by July 14. For more details, call Jonna at 256.7425 or 800.375.7423. Space is limited (first 30 kids) so enroll today!

Watts Up Kids Camp

Wednesday, July 30

Students Name (Print) _____

Age _____ Grade _____ T-shirt size _____

Parent Name _____

Address _____

City _____ State _____ Zip _____

Home Phone (____) _____ - _____

Work Phone (____) _____ - _____

Cell Phone (____) _____ - _____

Please mail form to: Jonna Hensley
Northwestern Electric Cooperative
P.O. Box 2707, Woodward, OK 73802



What to do when the power goes out

Northwestern Electric is committed to providing you reliable electric service. But situations such as storms, accidents, fires, animals or construction-related incidents can cause power outages.

Here are the steps to take when your power goes off:

1. Start at home. Check the fuses or circuit breakers in your home's main electrical service panel. If all the breakers are in the "on" position (as opposed to "off" or "tripped"), turn off the main breaker, then switch it back on. If you have a fuse box, make sure the fuses are all intact. Turn off the main power switch, then turn it on again.

2. If the power is still off, check the outside disconnect located beneath the electric meter. Not all meters have a breaker switch installed, but if you do, flip it to off, then back to on.

3. If that doesn't resolve the problem, check with your neighbors to see if they have power. If they don't have power either, the outage is probably related to the power line that provides

service to your area. On the other hand, if your home is the only one in your area without power, the problem may be related to the electric transformer that provides power to your home.

4. Once you've talked with your neighbors and determined they are out of power, call us at 877.966.7693 to report the problem. When you call, be sure to tell the dispatcher the nature of your problem and the approximate time you lost power.

Outages that occur in severe weather, or that last for an extended period of time, can place a heavy burden on the system at the moment the power is restored. To prevent an overload on the system and to protect your appliances, turn off every inside light except one and as many appliances and electronics as possible—including heating or air conditioning systems. (18237001)

Northwestern Electric strives to keep outages down to a minimum, but they are a fact of life. Remember to follow the recommended steps and never assume we know about your



When your power goes out, remember to check the breakers located directly under the meter.

power outage. Call our dedicated outage number 877-9NOPOWER (877.966.7693) to report the electricity is off. You can also report your outage with our mobile app or outage texting service. Our crews will work as quickly and safely as possible to restore power.